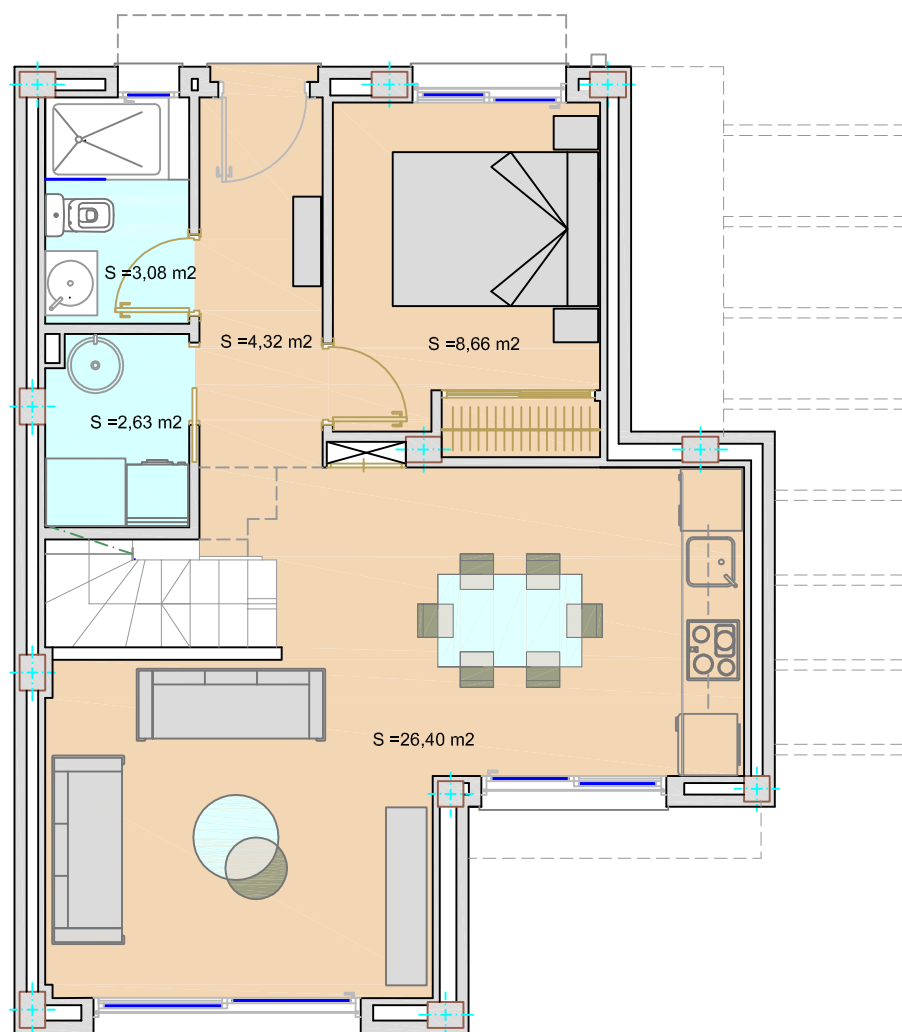
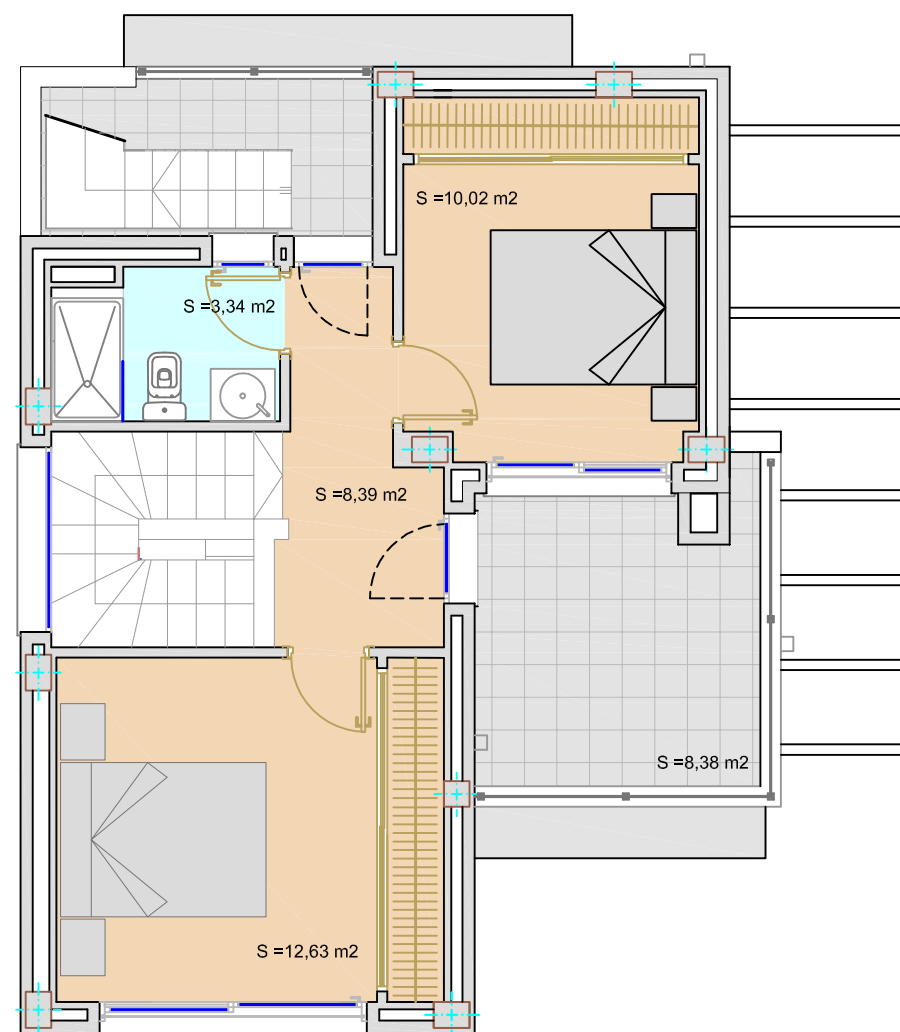


Tindra El Mirador- Fase II

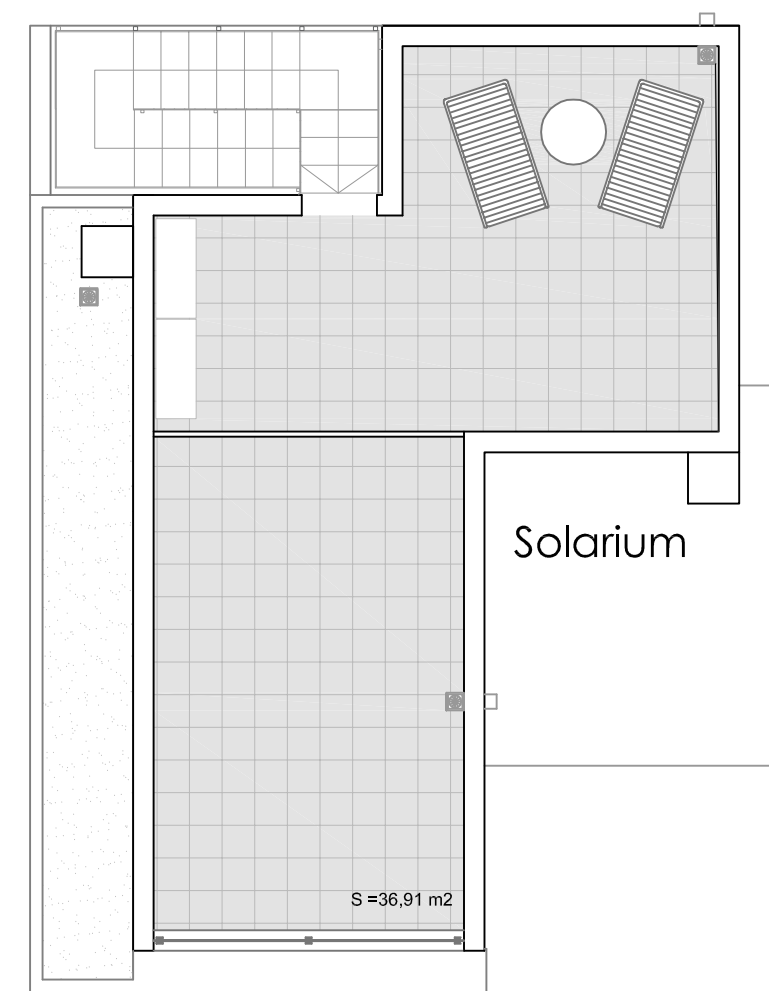
Vivienda Tipo A



Planta Baja



Planta Primera



Solarium

EL MIRADOR - FASE II - VIVIENDA TIPO A
VIVIENDAS DE LA 1 A LA 9

SUP. CONST. P.B. = 56,02 M².

SUP. CONST. P.1ª. = 47,09 M².

TOTAL SUP. CONST. = 103,11 M².

